

# The Patford Post



[www.patfordhousepartnership.co.uk](http://www.patfordhousepartnership.co.uk)

## News from Patford House Partnership

### DoctorLink—a new convenient way to access health advice online

DoctorLink is new online tool developed by Medvivo Digital Ltd and now available to patients at Patford House Partnership. It aims to provide patients with more timely, easier access to 24/7 healthcare advice.

Doctorlink enables you to get medical advice for symptoms by answering a series of questions using an online tool. This means that you can receive medical advice tailored to you and your condition.

If Doctorlink recommends that you see a GP, you can also request an appointment online while you are logged in and this request is sent direct to the surgery. We can then contact to you to arrange a suitable appointment time.



We are currently trialling Doctorlink, which can be accessed by following this link:

<https://www.doctorlink.com>

We welcome your feedback on this new initiative.

### Flu Clinics 2017

This year's flu clinics will run on Saturday 30th September and Saturday 28th October at Patford House. Sutton Benger's flu clinic will be on Tuesday 31st October. Appointments will be bookable from 1st September.

## Vaccinations—Are you up to date?

### SHINGLES

You are eligible for the shingles vaccine if you are:

**Aged 70 years** plus anyone in their 70s who was born after 1 September 1942 and has not yet had the vaccine

**Aged 78 years** plus anyone aged 79 years old who has missed out on the vaccine

Patients remain eligible until their 80th birthday.

### MenACWY

Students going to university or college for the first time, including overseas and mature students up to the age of 25, are recommended to have the Men ACWY vaccine, ideally before the start of the academic year.

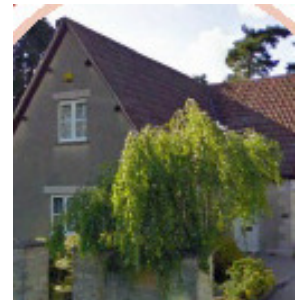
This vaccine protects against four different strains of the meningococcal bacteria that can cause meningitis and septicaemia.

**For an appointment please contact reception**

Volume 6, Issue 2  
June 2017



**Patford House Surgery**  
8a Patford Street  
Calne  
Wilts SN11 0EF  
Tel: 01249 815407



**Sutton Benger Surgery**  
Chestnut Lane  
Sutton Benger  
Wilts SN15 4RP  
Tel: 01249 720244

### Useful Contacts:

**Out of Hours Care** 111

**Chippenham Hospital**  
Switchboard & Minor Injuries  
Unit 01249 447100

**The Great Western Hospital**  
Swindon 01793 604020

**The Royal United Hospital**  
Bath 01225 428331

**Carers Wiltshire**  
0800 181 4118

## Welcome to Dr Stefan Atanasov

Dr Stefan Atanasov will be joining Patford House Surgery in August as our new GP Registrar. He is a fully qualified doctor undertaking further training to become a General Practitioner.



As a training practice, Registrars make up an important part of our clinical team.

Dr Atanasov will be working with us until August 2018 and will see patients at both Patford House and Sutton Benger.

## Need Physiotherapy? You can now self-refer

A new scheme has been introduced locally whereby patients who have been recommended to have a course of physiotherapy can self refer rather than requiring a GP to do this for them.

The forms are available on our website or from reception. Please complete Part One first to ensure you are suitable for this service. If you are, then complete Part Two and send it to Physiotherapy Dept at Chippenham Community Hospital as indicated at the end of the form. The Physiotherapy Dept will then contact you by letter or phone to arrange an initial consultation.

This process should ensure patients are seen sooner by the service they need and also frees up GP appointments.

## Enhanced Summary Care Record—what is it?

Your Summary Care Record contains important information about your health that can be accessed by eg ambulance staff or hospital doctors who may see you. You can now choose to have additional information in your Summary Care Record including your illnesses, health problems, operations, vaccinations etc—this is called an **Enhanced Record**. This may be useful especially

for patients who have more complex health needs. For more information about the changes please contact the surgery or visit [www.hscic.gov.uk/scr](http://www.hscic.gov.uk/scr). If you would like an Enhanced Summary Care Record, consent forms are available on our website.



## Advice for Hayfever Sufferers—What Can Help Symptoms?

Now that summer seems to finally be here, many of us start to suffer with symptoms of hayfever. Your local pharmacy is the best place to get advice and over the counter medication to manage these symptoms.

Other ways to help reduce the effects of hay fever include:

- Wearing wraparound sun glasses when outdoors to protect the eyes
- Showering and changing your clothes after being outdoors will help stop the spread of pollen through your home
- Putting a small amount of petroleum jelly in your nose helps to trap pollen grains
- Keeping an eye on the weather forecasts and staying indoors to avoid going out when the pollen count is high

Remember, further health advice is available from NHS111 or on the NHS Choices website [www.nhs.uk](http://www.nhs.uk)

## Summer Bank Holiday Opening

Both Patford House and Sutton Benger Surgeries will be closed on Monday 28th August due to the Bank Holiday. We will reopen as usual on Tuesday 29th.

